

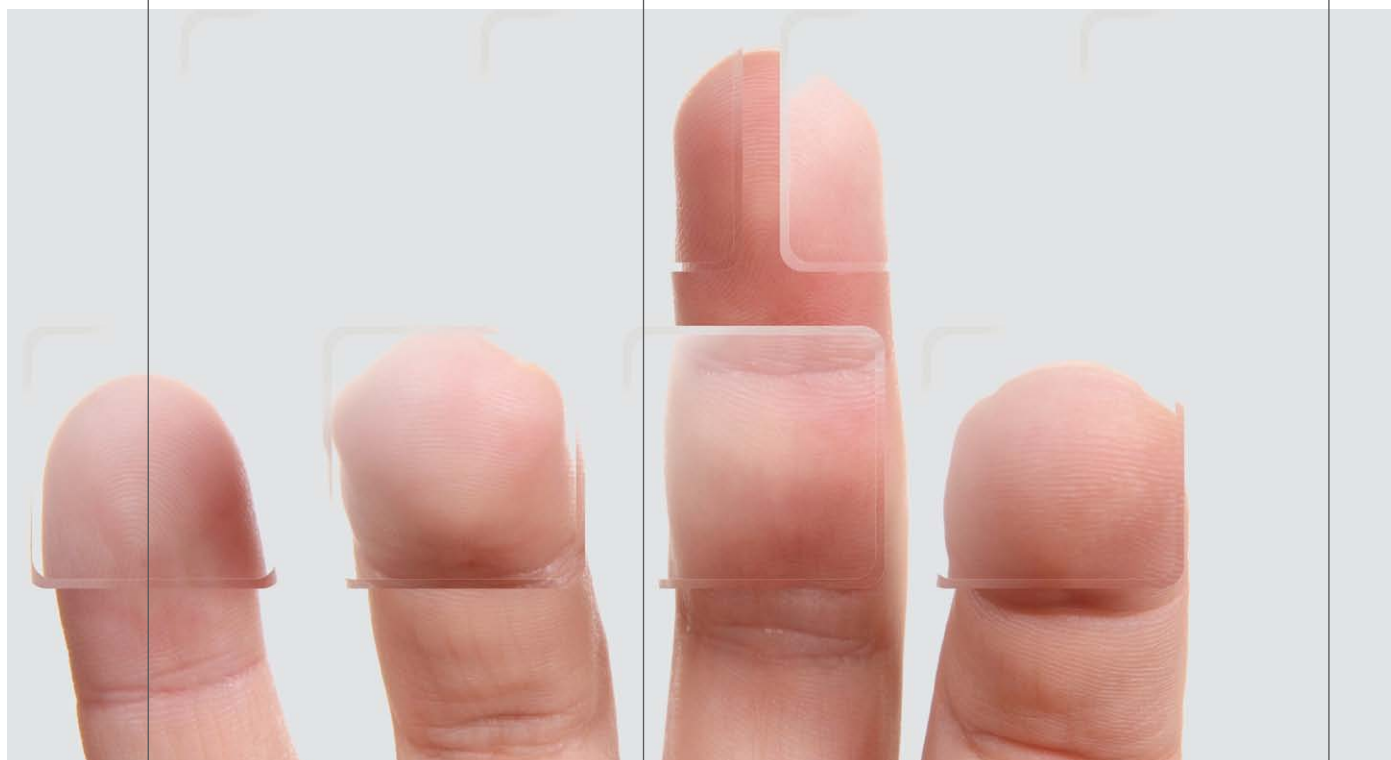


**control panel platform**  
single-phase control panels

# STANDARDEU

Applicable to doors  
folding · sliding · swing · sectional  
barriers · posts

single-phase control panel



## In line with European standards

A new generation of control panels designed and prepared to meet the requirements of standard EN 13241-1: 2003 for industrial, commercial, garage doors and gates, with special emphasis on Safety in Use of Power Operated Doors as per European Standard EN 12453.

## Design

Pleasantly-shaped, waterproof and practical boxes. With space for wiring and motor capacitor.

## Versatile panels

An extensive, powerful range of panels for applications in shops, residential garages, large and small communities and industry, etc.

## Optimum reliability

The careful selection of components and thorough tests carried out under real conditions of use ensure optimum installation reliability.

## Time-saving and greater precision

Digital programming provides faster and more precise adaptation and programming of the panel to suit any type of door. No more than five minutes are required for the entire programming.

**jcmtechnologies**  
be a step ahead with technology and imagination

Single-phase operating panels for up-and-over, sliding, folding and sectional doors, barriers and posts.



**STANDARD-1T-EU · STANDARD-2T-EU**

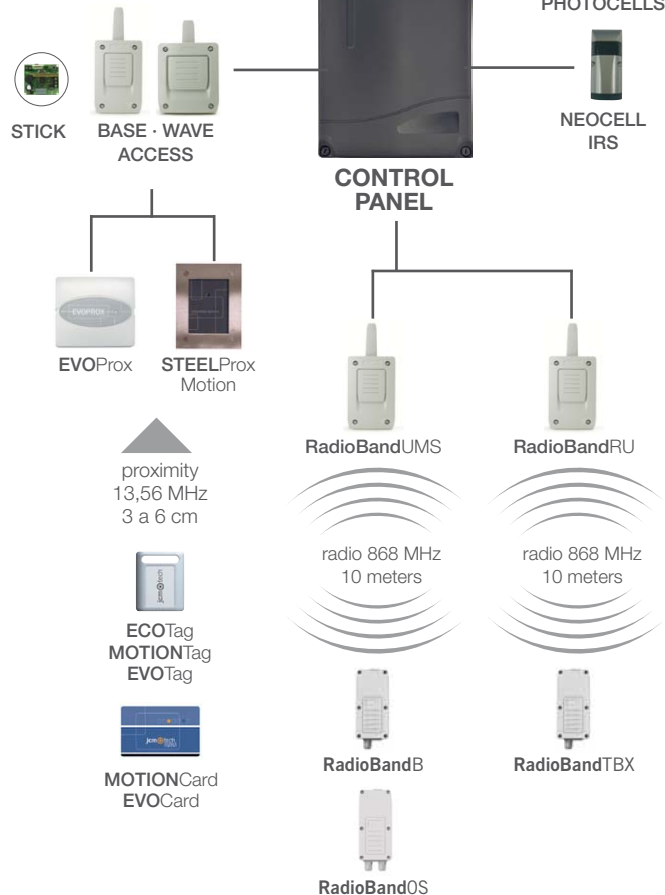
TRANSMITTERS 868 MHz



radio 868 MHz  
100 meters



RECEIVERS 868 MHz



CONTROL PANELS



- Operating panel for up-and-over, sectional, sliding, barrier, barrier and one-leaf swing garage doors.
- Independent time adjustment for open/close, for operation and for leaf.
- Automatic standby time.
- Motor phase shift adjustment (for Standard 2T-EU).
- With gentle opening and closure stoppage (deceleration at end of opening and closure movement).
- Can operate in automatic or semi-automatic (no automatic closure) mode.
- Reverse striker.
- Option switch to select pre-signal, automatic closure and no reverse on opening and closure by safety contact, among others.
- Pedestrian opening.
- Acoustic signal during door movement.
- Electric lock output.
- Status display by ERROR LED.
- Active input switch. Safety inputs not used do not have to be bridged.

STANDARD-1T-EU

- Max. motor power 230V/0.75CV (0.55KW) single-phase.
- Motor power adjustment by potentiometer.
- 433 or 868 MHz radio card connector.
- Traffic light card connector.
- Digital operating time programming.
- Start, pedestrian, open/close and stop button input.
- Power ON light indicator.
- Control inlet status LED.
- Limit switch connection, independent open/close.
- Security edge connection, independent open/close.
- Security contact connection, independent open/close.
- 24Vac output (max. 750mA).
- Auto-test output for security element.
- Outlet for electric lock, 12 V dc/1st outlet works for 2 seconds.
- Voltage-free outlet for courtesy light contact max. 100W at 230Vac (operating time + 30 seconds).
- Voltage-free outlet for signal light, max. 250Vac/12A (contact closed during door movement).
- Removable connectors.
- IP54.
- Box dimensions: 225 x 195 x 85 mm.

STANDARD-2T-EU

- Same as Standard 1T-EU but for two motors.
- 1 or 2-motor operations using option switch.

ACCESSORIES

STICK30 · STICK500 · RACK1 · RACK2 · TlCard-R (señalización)